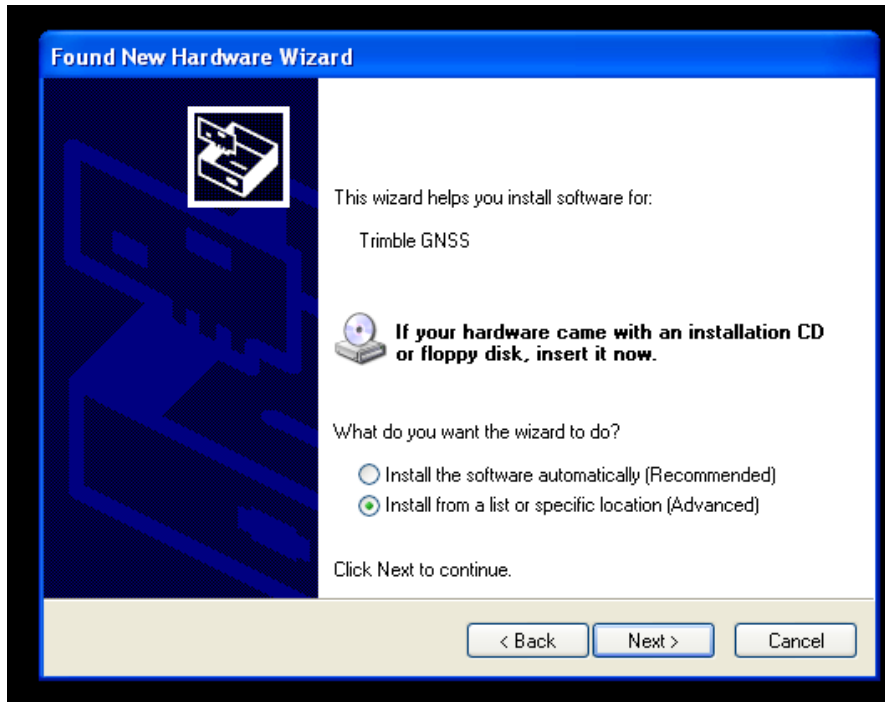
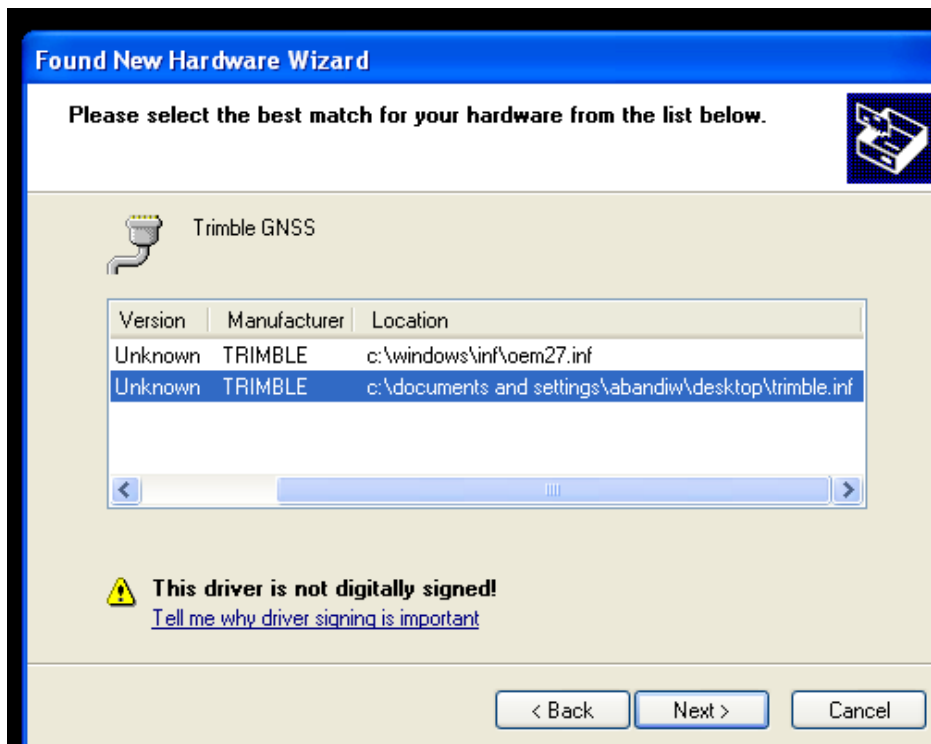


Setting up the Receiver for USB Compatibility

1. Connect the receiver to an external device using the USB-Serial cable.
2. On a Windows platform, any new hardware will automatically be detected by the Operating System and open a hardware driver installation window.



3. Select the “Install from specific location” option.
4. The next screen will ask you how you want to search for the USB driver. Click on the “Search for the Best Driver in these locations” tab and check on “Include this location in the search” if you have the driver *.inf file saved on your computer. If not then select the appropriate location either on a CD or floppy disk.
5. Select the appropriate *.inf file once you have located it.



6. If Windows gives an error stating it can not find the “USB.SYS” file, check to make sure you have this file in the Windows driver folder and not elsewhere. This file should normally be in “C:\Windows\System32\Drivers” folder.
7. Once installation is complete, Windows should automatically detect the Trimble device on USB. To confirm if the drivers have been properly loaded, connect the receiver to the device using USB. Open ‘Device Manager’ :--

START → CONTROL PANEL → SYSTEM → HARDWARE → DEVICE MANAGER

8. Depending on how the USB port is set up, it should show up in one of the I/O sections under ‘Device Manager’.

